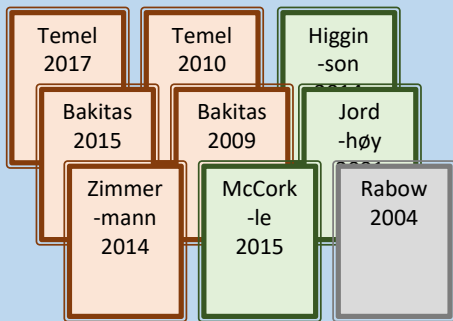


# Palliative Cancer Care

## Lessons from the *Annals of Behavioral Medicine* meta-analysis

Hoerger et al. "Impact of interdisciplinary outpatient specialty palliative care on survival and quality of life in adults with advanced cancer: A meta-analysis of randomized controlled trials."



9 RCTs of outpatient palliative care in cancer

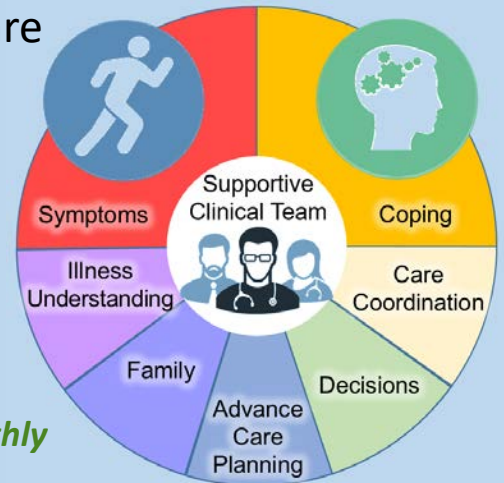
- 5 high-quality
- 3 preliminary
- 1 no data

### What is palliative care?

Specialized care to support **Quality of Life**



≈ 30 minutes weekly to monthly

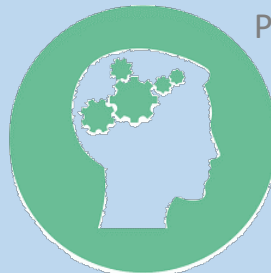


### Does palliative care work? YES!



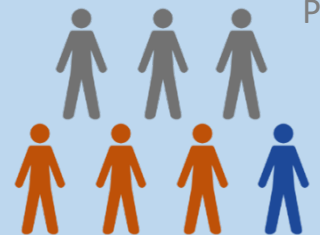
P=.006

Better **Physical** well-being



P=.001

Better **Psychological** well-being



P<.001

1-in-7 **More Patients Alive** at 1 year

Learn more at [pallonc.com](http://pallonc.com)